



# Planning for an eruption



**Auckland  
Emergency Management**  
Te Rakau Whakamarumaru o Tāmaki Makaurau



# Volcanic Hazards



**Auckland  
Emergency Management**  
Te Raukau Whakamāramaru o Tāmaki Makaurau



# Auckland Emergency Management Group Vision

*Working together to  
build a resilient  
Auckland*



## Auckland goals



**Reduction:** Reducing risks from hazards to Auckland.



**Readiness:** Increasing community awareness, understanding preparedness and participation in emergency management.



**Response:** Enhancing Auckland's capability to manage disasters.



**Recovery:** Enhancing Auckland's capability to recover from disasters.



**Resilience:**  
Auckland-specific goal

# THE CITY AT A GLANCE

**1.6m**

People live in the Auckland region

**200** different ethnicities

**90/30**

90% of the population lives within 30% of the land area of the region

**92,000**

During business hours, the population of the CBD is greater than 91,840 people

**70%**

Of all international arrivals to New Zealand arrive at Auckland Airport (~70k / week)

**40%**

Of the population is born outside NZ, 30% outside Auckland

**37%**

Of New Zealand's gross domestic product is from Auckland. THIS IS ABOUT \$90b

**340**

New houses are built each week

**820**

New residents each week

**41%**

Of all New Zealand tertiary students study in Auckland

**1/3**

Of New Zealand's population

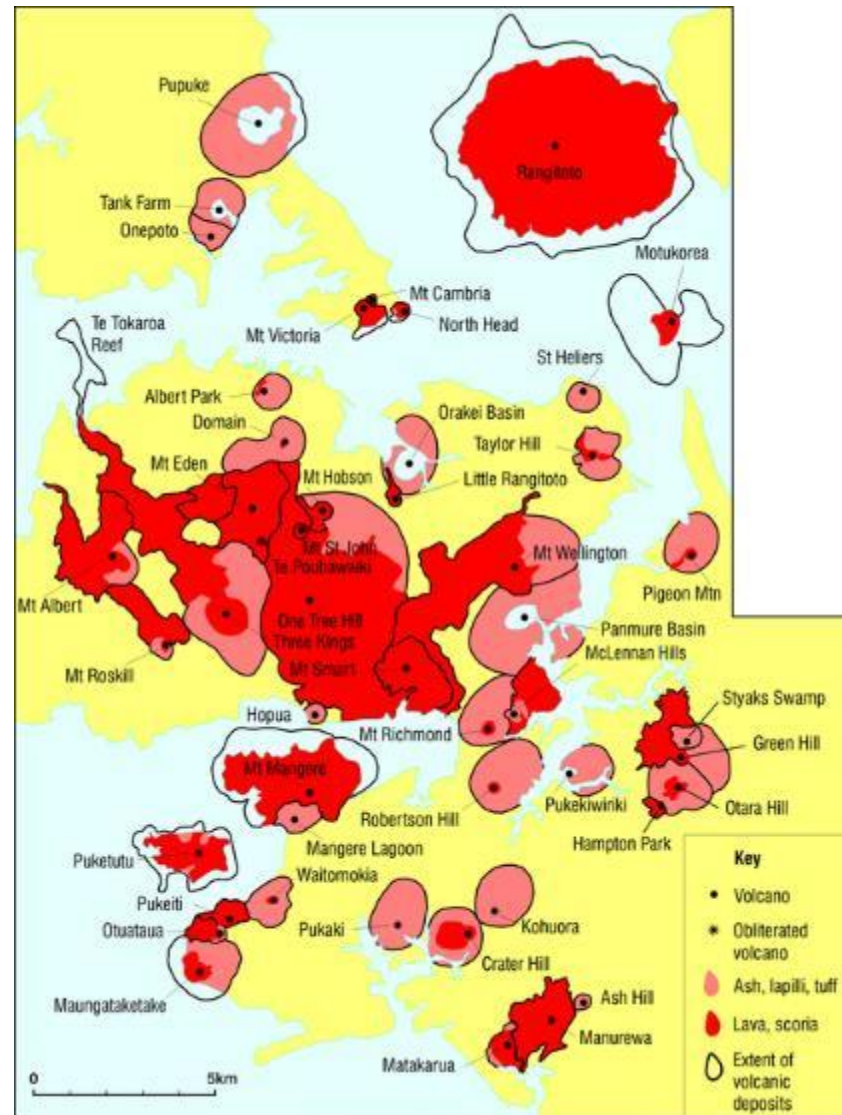
**2.19**

EM staff per 100,000 population (3.52 Canterbury, 6.72 BOP, 166.7 Chatham Is. )

# Volcanic Hazards



# Auckland Volcanic Field



# Auckland infrastructure



Part A

## Legend

Critical utilities/assets

✈ Airport

🚢 Port

🚒 Fire Service

👮 Police

🚑 Ambulance

🏦 Bank

🍷 Food supply

🏥 Hospital

Major Lifelines

— Motorway

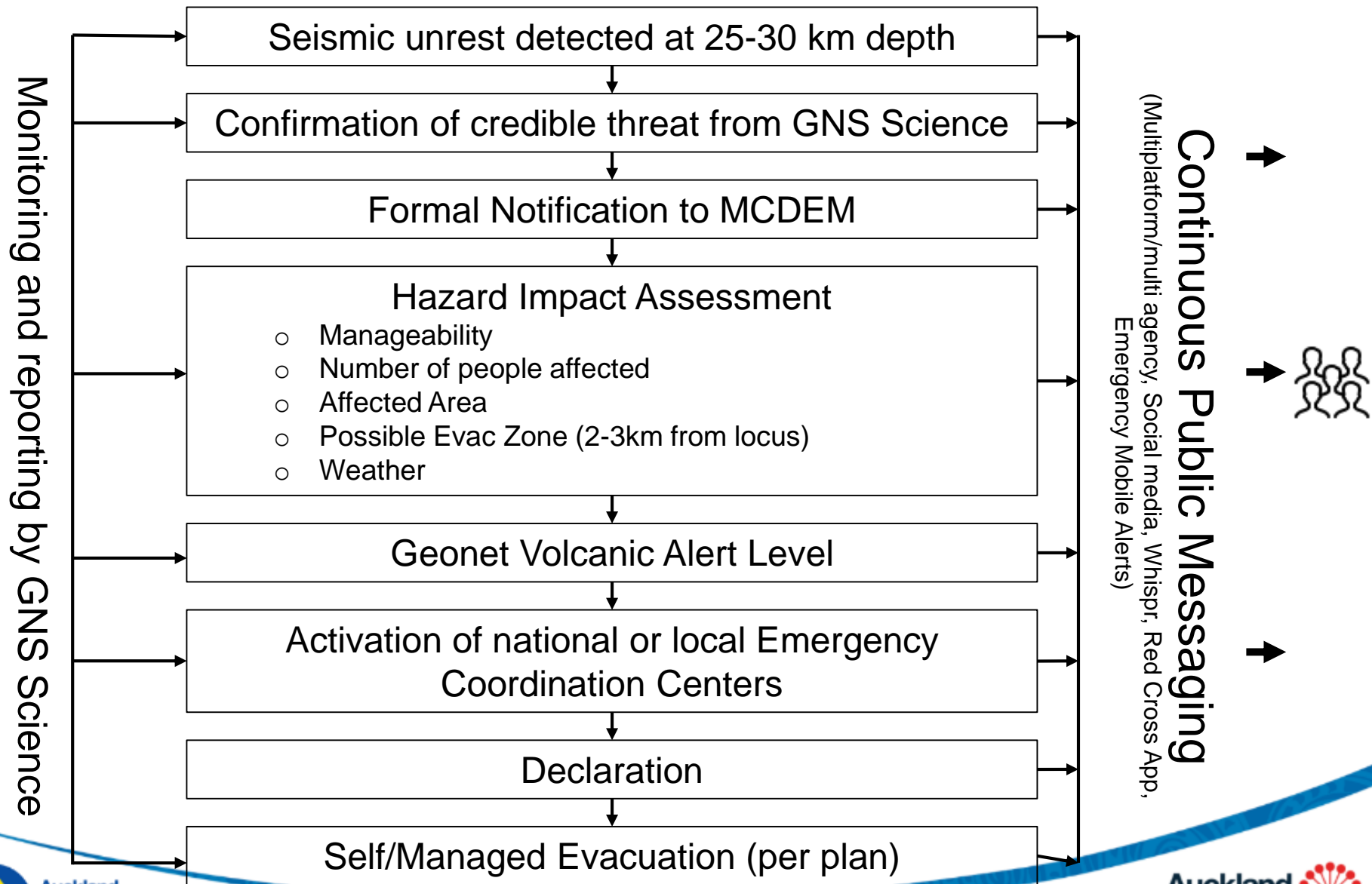
— Water Pipe

— Transpower Lines

— Liquid Fuels Pipeline Marsden to Win



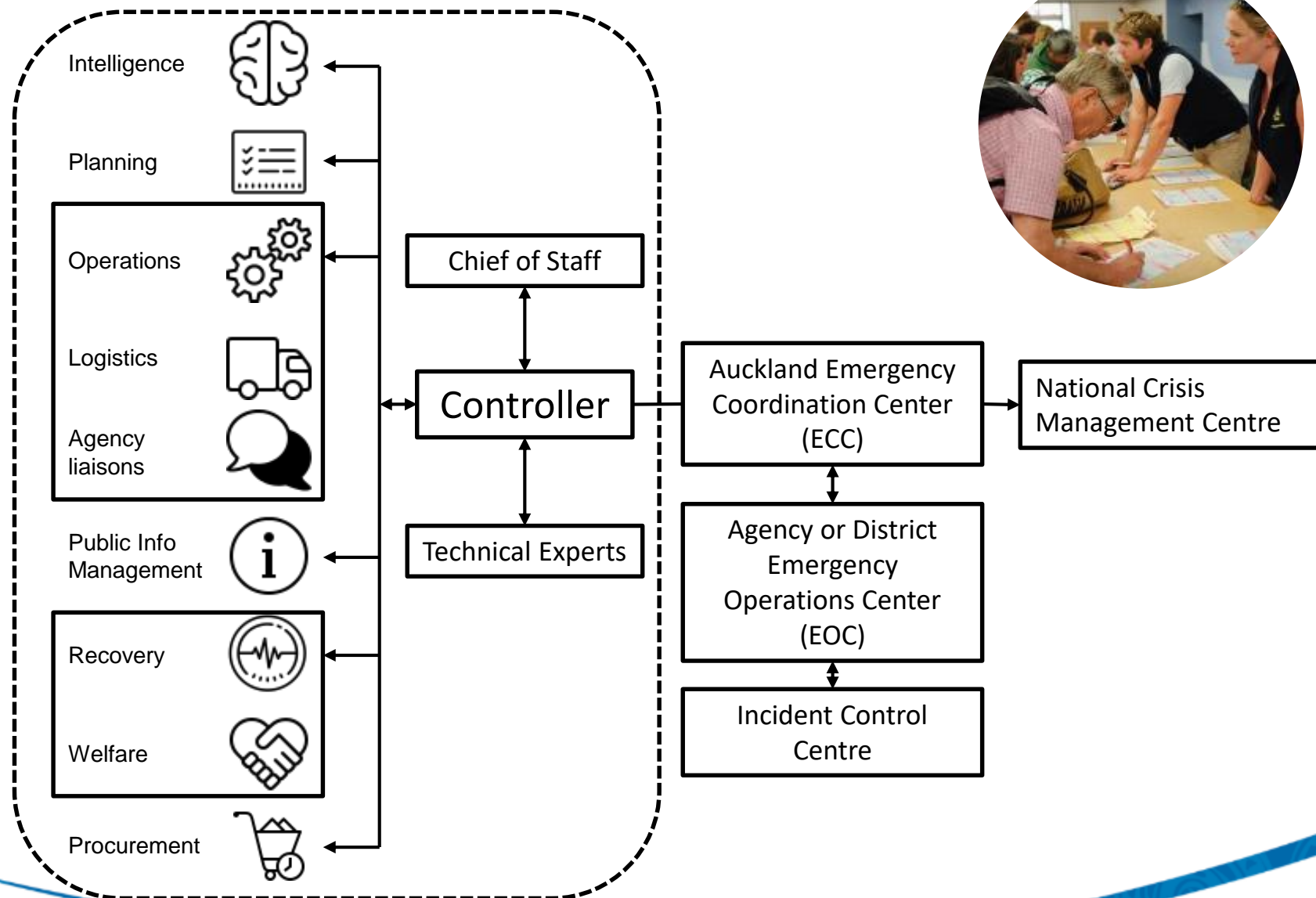
# Timeline to disaster



# At all stages of EM we collaborate with our partners and stakeholders.



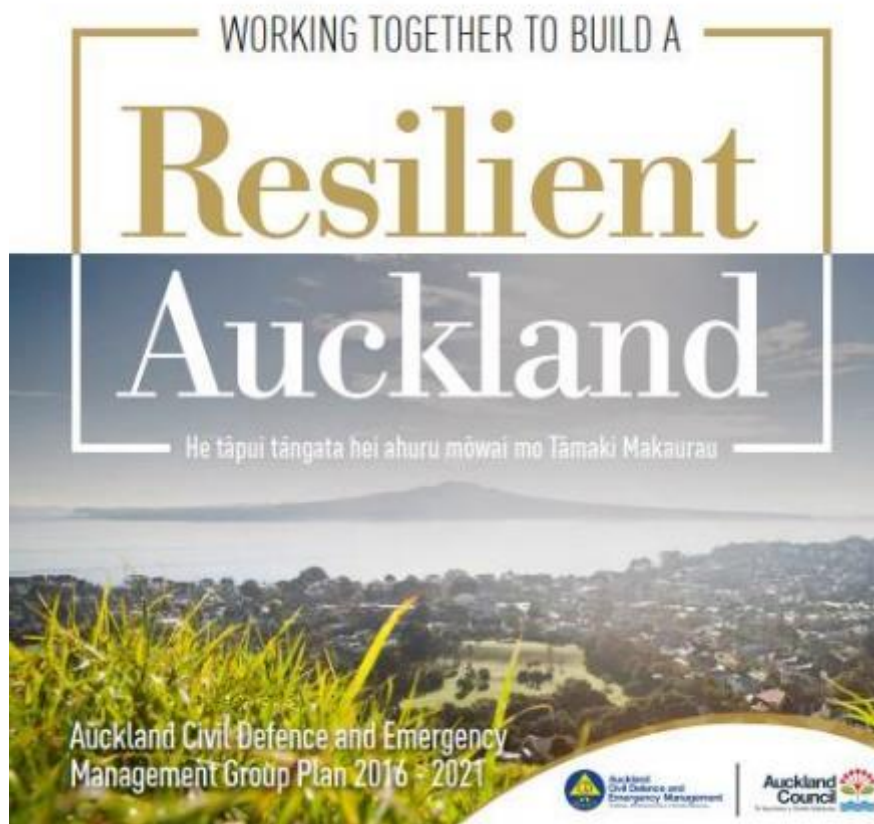
# Our Response Framework



# World-class and purpose-built facilities



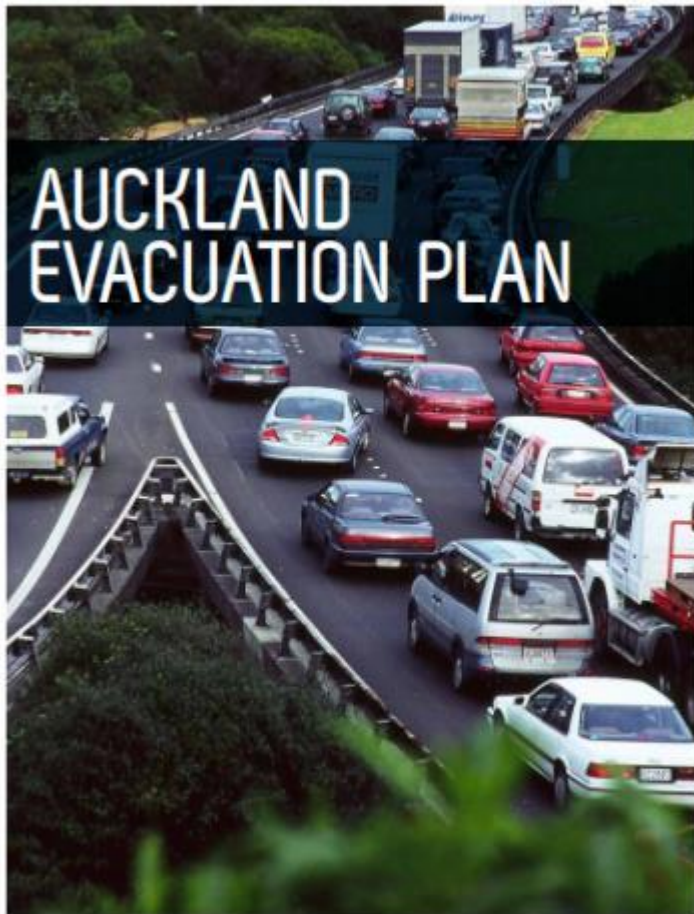
# Business as Usual: Plans



*Identify, strengthen, and coordinate the regions resources and capabilities*

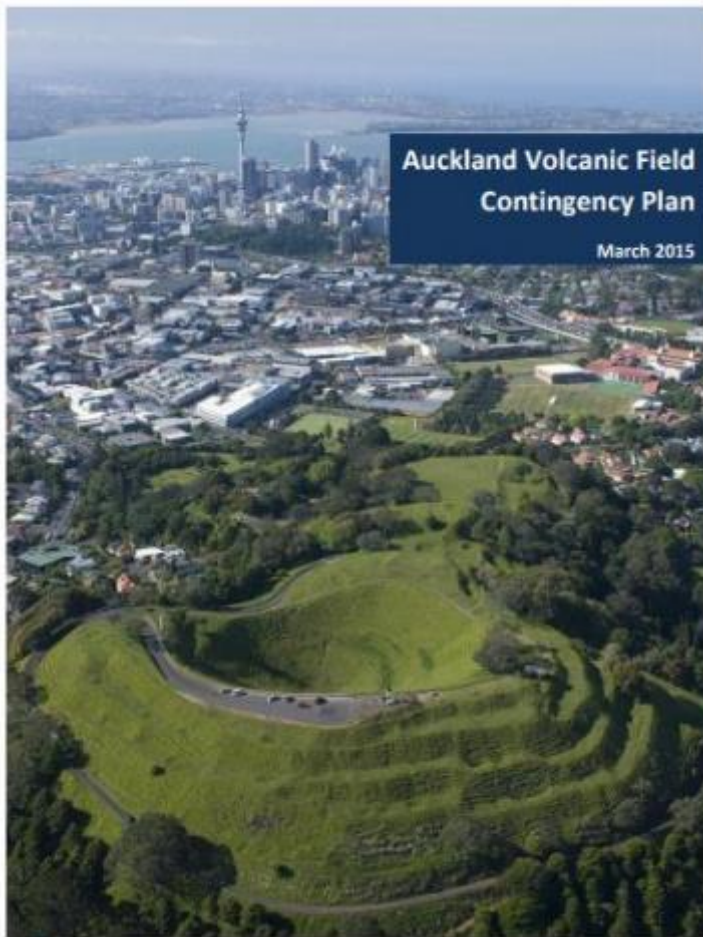
- Statutory obligation
- Draws on other documents including:
  - *Transforming our world: the 2030 agenda for sustainable development (United Nations)*
  - *Sendai Framework for Disaster Risk Reduction*
  - *The Auckland and (Unitary) Plan*
  - *Legislation*
- Identifies priority hazards
- Outlines CDEM relationships
- Provides framework for actions to deliver on our goals





## *Decision -> Warning -> Evacuation -> Shelter -> Return*

- Principles and processes for coordinated evacuation planning
- All hazards – all scales approach
- Roles and responsibilities of different agencies
  - *Auckland Emergency Management, NZ Police, FENZ, St Johns, MoH, etc.*
- Complete response guidance:
  - *Transport and Traffic Management (including cordon access management)*
  - *Logistics*
  - *Public Information Management*
  - *Field Team Management*



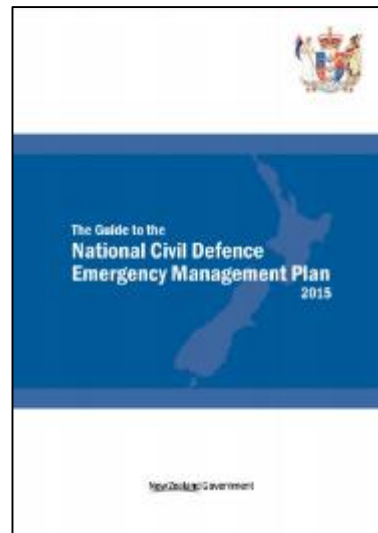
*Identify, strengthen, and coordinate the region's resources and capabilities*

- Currently in redevelopment
- Operational document, focusing on first 72 hours volcanic eruptions
  - *Base surge*
  - *Volcano formation*
  - *Air-fall tephra*
  - *Lava*
  - *Gas*
  - *Ballistics*
  - *Shockwaves*
  - *Earthquakes*
  - *Lightning*
  - *Tsunami*
- Effects on the **built, economic** and **social** environments
- Monitoring, risk assessment, response activities

*Movement away from contingency planning towards impact-based planning*

## Other plans:

- National Civil Defence and Emergency Management Plan
- Natural Hazards Risk Management Action Plan
- Auckland Region Fuel Contingency Plan
- Auckland Civil Defence and Emergency Management Welfare Plan
- And others...



# Exercise Ruaumoko

- Largest national Civil Defence exercise: simulate response to volcanic eruption in Auckland
- Full activation of emergency coordination and operations centers, including National Crisis Management Center
- Over 1000 participants from over 100 different agencies and organizations
- From “detection” of deep earthquakes -> public response -> event



# Innovative Auckland

*Effective response is not the only way we can build capacity and resilience in Auckland.*

- Modified volunteers and controllers courses
- City-wide MOU with over 10,000 Air B&B hosts
- New website and Hazards view portal
- Recovery Walkthrough:
  - Innovative tool engage key partners and stakeholders in pre-event recovery planning
- Natural Hazards Research Fund
- Risk Communications Toolbox
- Orewa Tsunami walk (4000+ participants)



# Resilient Auckland

*A community that fields empowered, prepared, connected, and organised*

Work with communities to:

- Foster relationships with key community leaders and influencers
- Build and maintain strong partnerships
- Empower community-led local action
- Use and strengthen social networks and assets
- Identify vulnerable groups
- Build organisational resilience with BCPs



# Prepared Auckland



## Auckland's Preparedness

*(Based on the most recent survey of 400 Aucklanders, run every quarter)*

- 85% have a good understanding of the types of disasters that could occur in Auckland, and the chances of them occurring.
- 86% of Aucklanders know what actions to take if a disaster struck there area.
- 61% have the necessary emergency items needed to survive a disaster, such as tinned food, toilet paper, torch, spare batteries etc.

***“Tra il dire e il fare c'è di mezzo il mare”***

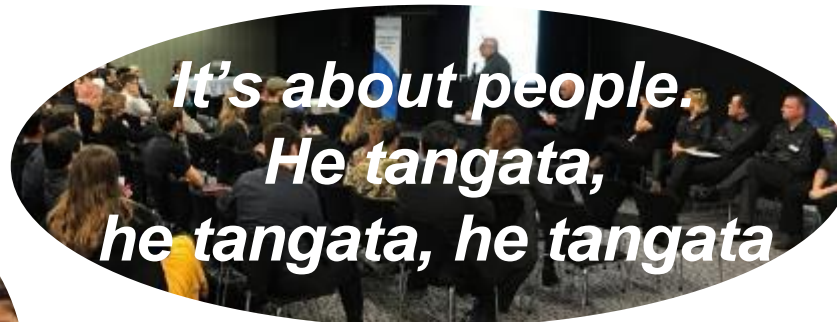


Auckland  
Emergency Management  
Te Raukau Whakamaramaru o Tāmaki Makaurau



Auckland  
Council  
Te Kauhēra o Tāmaki Makaurau

# Safe Auckland, together



Auckland  
Emergency Management  
Te Raukau Whakamaramaru o Tāmaki Makaurau



Auckland  
Council  
Te Kauhira o Tāmaki Makaurau